



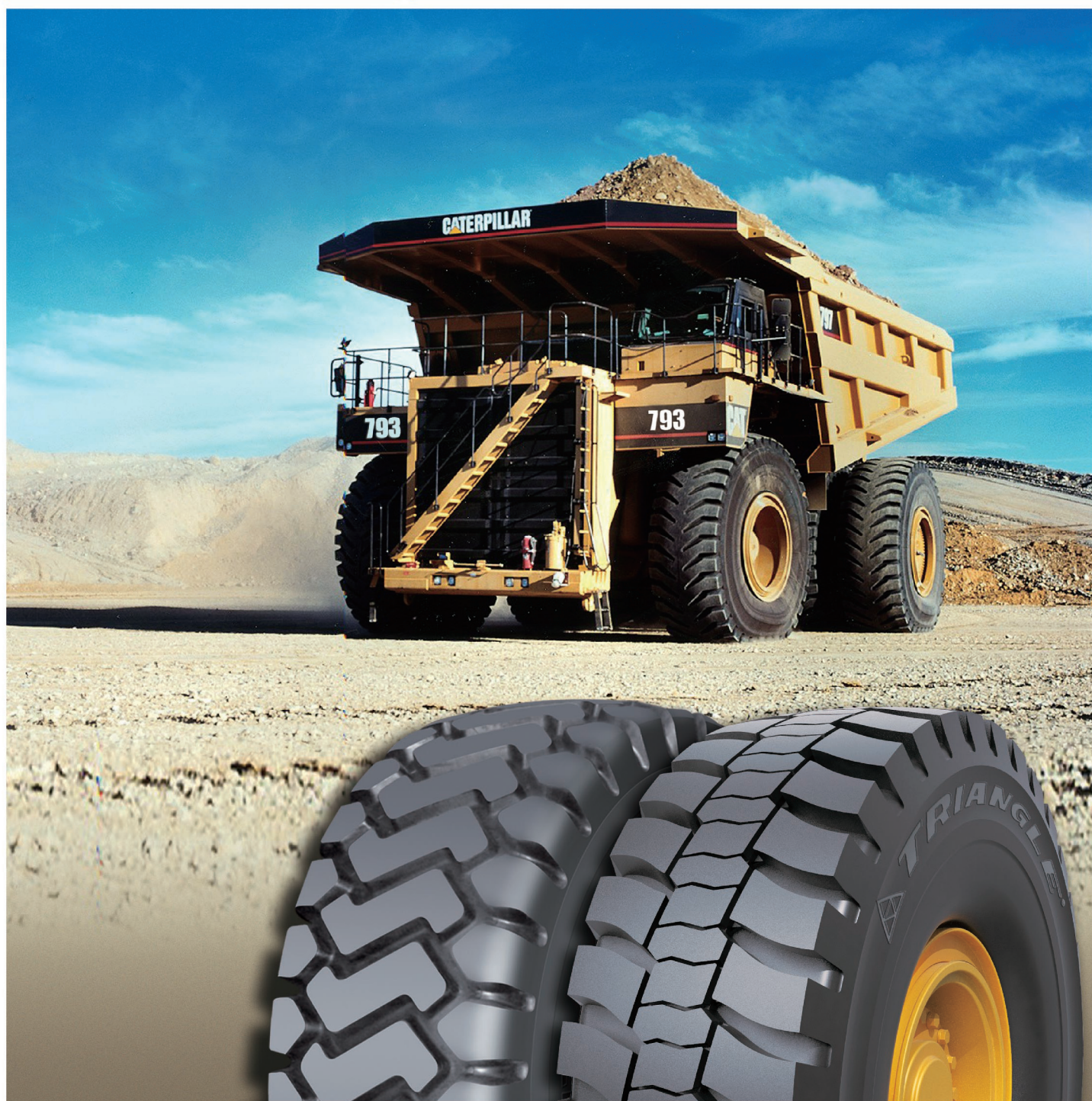
三角集團有限公司
TRIANGLE GROUP CO.,LTD

 **TRIANGLE®**

TRIANGLE TIRES

2012 VERSION

OFF-THE-ROAD



COMPANY BRIEF INTRODUCTION

Triangle Group was founded in 1976 and is the largest tire producer in China. Its products include truck and bus radial tires (TBR), passenger car and light truck radial tires (PCR/LTR), off-road radial tires (OTR), jumbo OTR tires, as well as various types of bias tires and retreaded tires. Triangle has an annual production capacity of 30 million units.

Through the years, Triangle has dedicated itself to innovation, development and manufacturing of commercial and passenger vehicle tires for customers around the world for a variety of field applications. Currently Triangle offers more than 4000 types of tires to its domestic and global customers. Triangle was the first tire brand in China to receive the prestigious certification of "China World-Famous Trademark" and "China Name Brand Product". Triangle sold over 20 million tires annually to customers in over 160 countries and regions. It has earned recognition from its customers worldwide with top quality products and excellent services.

With the excellent performance of its products, Triangle gained official product certifications from over 60 countries

and organizations, which meet the certification requirements of the entire global market. The certifications include: CCC、ECE、DOT、ECE-Noise、INMETRO、LATU、GSO、SEI and others. Triangle also passed the stringent performance tests of Goodyear, Caterpillar and Volvo, and have since established strategic partnerships with them. Triangle plays a leading role in China's domestic market, providing OE tires to more than fifty major Chinese automobile companies, such as Sinotruk, First Auto Works, Dongfeng Motor Corporation, SGM, SGMW, Chongqing Changan, Chery Automobile Co., as well as Shandong Lingong Construction Machinery Co., Shandong SEM Machinery Co., and Xuzhou Construction Machinery Group (XCMG), among others.

Triangle is committed to its three-fold mission to "provide the most valuable products and services; to continually develop overall efficiency and social responsibility; and to motivate and stimulate the improvement of its employees" in order to advance its global strategy as Triangle moves forward to become a leader in the global tire industry.



CONTENTS

CONVENTIONAL SIZE	4
WIDE BASE	16
65 SERIES SIZE	28
METRIC SIZE	30
UNDERGROUND MINING SERVICE AND SPECIALTY SIZE	32



TRIANGLE[®]

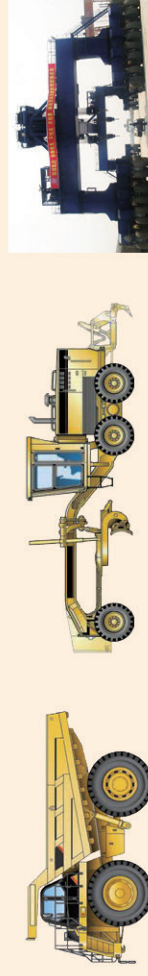
RADIAL & BIAS OFF-THE-ROAD TIRES



4 CONVENTIONAL SIZE



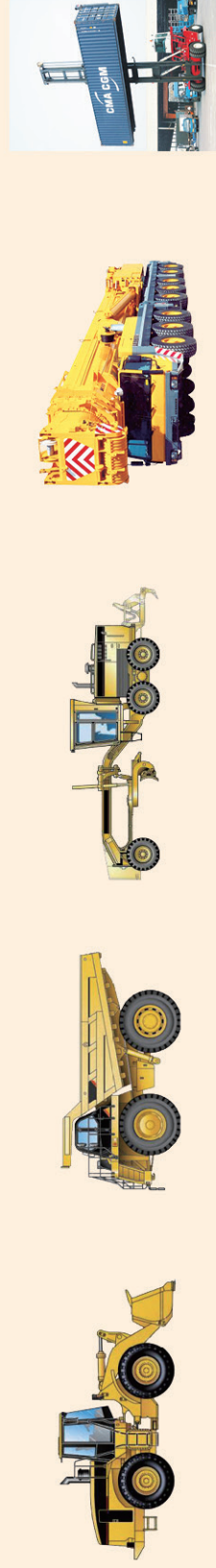
Size	Type	Ind Code	Rim Width & Flange	Min. Dual Spacing in mm	INFLATED DIMENSIONS		LOADED DIMENSIONS		Tread Depth 32 rd in mm	PERFORMANCE CAPABILITY		
					Overall Width in mm	Overall Diameter in mm	Static Load Rad in mm	T1		T2	T3	
13.00R25	TL569	E-3	10.00/1.5		13.8 350	51.2 1300			31.5 25			
14.00R24	TB536 ★/★/★	E-2	10.00W	17.7 450	14.8 375	53.9 1368	24.7 627		31.5 25	110	140	170
		G-2	10.00VA		14.8 375	53.9 1368	24.4 619		31.5 25			
		L-2	10.00VA		14.8 375	53.9 1368			31.5 25			
	TB586 ***	E-2	10.00W	17.7 450	14.8 375	53.9 1368	24.7 627		27.7 22	125	160	195
	TB516S ★/★/★	E-4	10.00W	17.7 450	14.8 375	55.8 1418	24.7 627		45.4 36	85	105	130
14.00-24	TL612 16,20,24,28PR	E-3	10.00	17.7 450	14.8 375	53.9 1370	25.5 647		37.8 30			
	TL558 24PR	E-3	10.00	17.7 450	14.8 375	53.9 1370	25.5 648		37.8 30			
14.00-24TG	TL508 12PR	E-2	8.00TG		14.2 360	53.1 1350	24.0 611		31.5 25			



6 CONVENTIONAL SIZE



Size	Type	Ind Code	Rim Width & Flange	Min. Dual Spacing in mm	INFLATED DIMENSIONS		LOADED DIMENSIONS		Tread Depth 32 nd in mm	PERFORMANCE CAPABILITY		
					Overall Width in mm	Overall Diameter in mm	Static Load Rad in mm	T1		T2	T3	
14.00R25	TB526 ***	E-3	10.00/2.0	17.7 450	14.8 375	53.9 1368	24.4 621	32.8 26	85	105	130	
	TB536 **/**/**	E-2	10.00/1.5	17.7 450	14.8 375	53.9 1368		31.5 25	110	140	170	
	TB586 ***	E-2	10.00/1.5	17.7 450	14.8 375	53.9 1368	24.6 626	27.7 22	125	160	195	
	TB516S **/**/**	E-4	10.00/1.5	17.7 450	14.8 375	55.8 1418		45.4 36	85	105	130	
14.00-25	TL558 28PR	E-3	10.00/2.0	17.7 450	14.8 375	53.9 1370	25.5 648	37.8 30				
16.00R25	TB586 ***	E-2	11.25/2.0	24.0 518	17 432	58.8 1493	26.9 682	30.2 24	165	210	255	
	TL558S **/**/**	E-4	11.25/2.0	24.0 518	17 432	61.0 1548		64.3 51				
	TSMS **/**/**	L-4S	11.25/2.0	24.0 518	17 432	61.0 1548	26.0 661	64.3 51				
16.00-25	TL612 28PR	TL612	11.25/2.0	20.2 513	16.9 430	58.9 1495	27.7 705	37.8 30				



45MPH (70KM/H) MAXIMUM SPEED SERVICE

RADIAL	PSI KPA	131 900
14.00R25 TB536,TB586	LBS KG	13200*** 6000***
16.00R25 TB586	LBS KG	16100*** 7300***

30MPH (50KM/H) MAXIMUM SPEED OFF-THE-ROAD

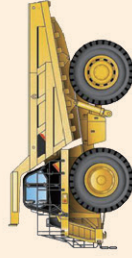
BIAS	PSI	40	44	47	51	54	58	62	65	69	73	76	80	83	87	91	93
	KPA	275	300	325	350	375	400	425	450	475	500	525	550	575	600	625	650
14.00-25	LBS	7400	7850	8250	8550	8800	9350	9650	9900	10200	10500	10700	11000	11400(24)	11800	11800	12300(28)
	KG	3350	3550	3750	3875	4000	4250	4375	4500	4625	4750	4875	5000	5150(24)	5350	5350	5600(28)
16.00-25	LBS	9650	10200	10700	11000	11700	12000	12300	12800	13200	13900	14300	14300	14800(28)			
	KG	4375	4625	4875	5000	5300	5450	5600	5800	6000	6300	6500	6500	6700(28)			
RADIAL	PSI	65	69	73	76	80	83	87	91	94	98	102	102				
	KPA	450	475	500	525	550	575	600	625	650	675	700	700				
14.00R25	LBS	8800	9100*	9650	4500	10200	10500	11000	11400	11700	12000	12300**	12760***				
	KG	4000	4125*	4375	9900	4625	4750	5000	5150	5300	5450	5600**	5800***				
16.00R25	LBS	11400	12500*	12300	12800	13200	13900	14300	14800	15200	15700	16100**					
	KG	5150	5450*	5600	5800	6000	6300	6500	6700	6900	7100	7300**					

5MPH (10KM/H) MAXIMUM SPEED OFF-THE-ROAD

BIAS	PSI	69	73	76	80	83	87	91	93	98	102	105	109	112	116	119	123	126	130	133
	KPA	475	500	525	550	575	600	625	650	675	700	725	750	775	800	825	850	875	900	925
14.00-25	LBS	14800	15200	15700	16100(16)	16500	17100	17600	18200	18200	18700(20)	13600	19800	19800	19800	20900	20900(24)	21400	21400	22000(28)
	KG	6700	6900	7100	7300(16)	7500	7750	8000	8250	8250	8500(20)	8750	9000	9000	9000	9500	9500(24)	9750	9750	10000(28)
16.00-25	LBS	19300	19800	20900	21500	20000	20000	22700	23400	24000	24700	24700	25400(28)							
	KG	8750	9000	9500	9750	10000	10000	10300	10300	10900	11200	11200	11500(28)							
RADIAL	PSI	76	80	83	87	91	94	98	102	105	109	112	116	120	131					
	KPA	525	550	575	600	625	650	675	700	725	750	775	800	825	900					
14.00R25	LBS	8800	9100*	9850	4500	10200	10500	11000	11400	11700	12000	12300**	12760***							
	KG	4000	4125*	4375	9900	4625	4750	5000	5150	5300	5450	5600**	5800***							
16.00R25	LBS	19300	19800*	20400	21500	22000	22700	23400	24000	24700	25400	26000	26800	26800**	29200***					
	KG	8750	9000*	9250	9750	10000	10300	10600	10900	11200	11500	11800	12150	12150	13250***					



Size	Type	Ind Code	Rim Width & Flange	Min. Dual Spacing in mm	INFLATED DIMENSIONS		LOADED DIMENSIONS		Tread Depth 32 nd in mm	PERFORMANCE CAPABILITY		
					Overall Width in mm	Overall Diameter in mm	Static Load Rad in mm	T1		T2	T3	
18.00R25	TB589 ***	E-2	13.00/2.5	23.5 598	19.6 498	63.68 1617	28.9 734	32.8 26	200	240	300	
	TB516S **/***	E-4	13.00/2.5	23.5 598	19.6 498	65.9 1673	28.9 734	56.7 45	150	190	240	
	TL558S **/***	E-4	13.00/2.5	23.5 598	19.6 498	65.9 1673		68.0 54				
	TSMS+ **	L-5S	13.00/2.5	23.5 598	19.6 498	65.9 1673	28.0 710	100.8 80				
18.00-25	L-5S 40PR	L-5S	13.00/2.5	23.1 587	19.7 500	63.6 1615	29.9 759	68.0 54				
	TL510 28,32,40PR	E-4	13.00/2.5	23.1 587	19.7 500	63.6 1615	29.9 759	98.9 78.5				
	TL612 28,32,40PR	E-3	13.00/2.5	23.1 587	19.7 500	63.6 1615	29.9 759	40.3 32				



9 CONVENTIONAL SIZE

45MPH (70KM/H) MAXIMUM SPEED SERVICE

RADIAL	PSI KPA	131 900																		
18.00R25 TB589	LBS KG	20900*** 9500***																		

30MPH (50KM/H) MAXIMUM SPEED OFF-THE-ROAD

BIAS	PSI KPA	40 275	44 300	47 325	51 350	54 375	58 400	62 425	65 450	69 475	73 500	76 525	80 550	83 575	87 600	91 625	93 650	98 675	102 700	
18.00-25	LBS KG	12300 5600	13200 6000	13900 6300	14300 6500	15200 6900	15700 7100	16100 7300	16500 7500	17100 7750	17600(28) 8000(28)	18200 8250	18700 8500	19300(32) 8750(32)	19800 9000	20400 9250	20400 9250	20900 9500	21400(40) 9750(40)	
RADIAL	PSI KPA	65 450	69 475	73 500	76 525	80 550	83 575	87 600	91 625	94 650	98 675	102 700								
18.00R25	LBS KG	14800 6700	15700* 7100*	16100 7300	16500 7500	17100 7750	17600 8000	18200 8250	18700 8500	19300 8750	19800 9000	20400** 9250**								

5MPH (10KM/H) MAXIMUM SPEED OFF-THE-ROAD

BIAS	PSI KPA	69 475	73 500	76 525	80 550	83 575	87 600	91 625	93 650	98 675	102 700	105 725	109 750	112 775	116 800	119 825	123 850	126 875	130 900	133 925	137 950
18.00-25	LBS KG	25400 11500	26000 11800	26800 12150	27600 12500	28300 12850	29100 13200	30000 13600	30000(28) 13600(28)	30900 14000	32000 14500	32000 14500	33100(32) 15000(32)	33100 15000	34100 15500	34100 15500	35200 16000	35200 16000	36300 16500	374000 17000	374000(40) 17000(40)
RADIAL	PSI KPA	76 525	80 550	83 575	87 600	91 625	94 650	98 675	102 700	105 725	109 750	112 775	116 800	120 825	131 900						
18.00R25	LBS KG	24700 11200	26000* 11800*	26800 12150	27600 12500	28300 12850	29100 13200	30000 13600	30900 14000	32000 14500	32000 14500	33100 15000	33100(32) 15000(32)	34200 15500	35300** 16000**	35300** 16000**	35200 16000	35200 16000	36300 16500	374000 17000	374000(40) 17000(40)



TB526S



TL510



TR139

Size	Type	Ind Code	Rim Width & Flange	Min. Dual Spacing in mm	INFLATED DIMENSIONS		LOADED DIMENSIONS		PERFORMANCE CAPABILITY		
					Overall Width in mm	Overall Diameter in mm	Static Load Rad in mm	Tread Depth 32 nd in mm	T1	T2	T3
18.00R33	TB526S **	E-4	13.00/2.5	23.1 587	19.6 498	73.9 1877	33.1 841	64.0 51	160	190	270
18.00-33	TL510 32PR	E-4	13.00/2.5	23.1 587	19.7 500	71.7 1820	33.9 861	69.3 55			
21.00-25	TR139 16PR	E-1	15.00/3.0		22.4 570	66.3 1685	29.4 748	17.6 14			
21.00R33	TB526S **	E-4	15.00/3.0	27.6 701	22.5 571	78.8 2001	36.0 914	66.0 52	190	230	300



30MPH (50KM/H) MAXIMUM SPEED OFF-THE-ROAD

[illegible]

5MPH (10KM/H) MAXIMUM SPEED OFF-THE-ROAD

[illegible]



TB526S



TL558



TL510

Size	Type	Ind Code	Rim Width & Flange	Min. Dual Spacing in mm	INFLATED DIMENSIONS		LOADED DIMENSIONS		PERFORMANCE CAPABILITY		
					Overall Width in mm	Overall Diameter in mm	Static Load Rad in mm	Tread Depth 32 nd in mm	T1	T2	T3
21.00R35	TB526S ★★	E-4	15.00/3.0	27.6 701	22.5 572	80.8 2052		76.0 60	230	280	365
21.00-35	TL558 32PR	E-3	15.00/3.0	27.6 701	22.4 570	78.9 2005	34.7 947	56.7 45			
24.00R35	TB526S ★★	E-4	17.00/3.5	31.3 795	25.7 653	85.6 2175		82.0 65	280	350	460
24.00-35	TL510 42PR	E-3	17.00/3.5	31.3 795	25.8 655	83.7 2125	39.4 1001	56.7 45			



13 CONVENTIONAL SIZE

30MPH (50KM/H) MAXIMUM SPEED OFF-THE-ROAD

BIAS	PSI	40	44	47	51	54	58	62	65	69	73	76	80					
	KPA	275	300	325	350	375	400	425	450	475	500	525	550					
21.00-35	LBS	19300	20400	20900	22000	22700	24000	24700	25400	26000	26800(32)	28300	28300(36)					
	KG	8750	9250	9500	10000	10300	10900	11200	11500	11800	12150(32)	12850	12850(36)					
24.00-35	LBS	24700	26000	26800	28300	29100	30900	32000	33100	34200	34200	35300	36300(42)					
	KG	11200	11800	12150	12850	13200	14000	14500	15000	15500	15500	16000	16500(42)					
RADIAL	PSI	65	69	73	76	80	83	87	91	94	98	102						
	KPA	450	475	500	525	550	575	600	625	650	675	700						
21.00R35	LBS	22700	23400*	24700	25400	26000	26800	28300	29100	30000	30900	32000**						
	KG	10300	10600*	11200	11500	11800	12150	12850	13200	13600	14000	14500**						
24.00R35	LBS	29100	30000*	24700	32000	34200	35300	36400	37500	38600	39700	40800**						
	KG	13200	13600*	11200	14500	15500	16000	16500	17000	17500	18000	18500**						

5MPH (10KM/H) MAXIMUM SPEED OFF-THE-ROAD

BIAS	PSI	69	73	76	80	83	87	91	93	98	102	105	109					
	KPA	475	500	525	550	575	600	625	650	675	700	725	750					
21.00-35	LBS	38600	39700	40800	41900	43000	44100	45400	46700(32)	46700	48100	49400	50700(36)					
	KG	17500	18000	18500	19000	19500	20000	20600	21200(32)	21200	21800	22400	23000(36)					
24.00-35	LBS	49400	50700	52000	53600	55100	56800	58400	58400	60000	61500	64000	64000(42)					
	KG	22400	23000	23600	24300	25000	25750	26500	26500	27250	28000	29000	29000(42)					
RADIAL	PSI	76	80	83	87	91	94	98	102	105	109	112	116	120				
	KPA	525	550	575	600	625	650	675	700	725	750	775	800	825				
21.00R35	LBS	37500	39700*	40800	41900	43000	44100	45400	46700	48100	49400	50700	52000	53600**				
	KG	17000	18000*	18500	19000	19500	20000	20600	21200	21800	22400	23000	23600	24300**				
24.00R35	LBS	48100	50700	53600	55100	56800*	58400	60000	61500	64000	64000	66000	66000	68000**				
	KG	21800	23000	24300	25000	25750*	26500	27250	28000	29000	29000	30000	30000	30750**				



TB526S



TL588



TB599

Size	Type	Ind Code	Rim Width & Flange	Min. Dual Spacing in mm	INFLATED DIMENSIONS		LOADED DIMENSIONS		Tread Depth 32 nd in mm	PERFORMANCE CAPABILITY				
					Overall Width in mm	Overall Diameter in mm	Static Load Rad in mm	T1		T2A	T2B	T2C	T3	
27.00R49 ★★	TB526S	E-4	19.50/4.0		27.6 700	105.8 2688			96 76	315	345	435	480	560
33.00R51 ★★	TL588	E-4	24.00/5.0		34.6 879	118.8 3018			107 85	350	415	520	575	695
36.00R51 ★★	TB599	E-4	26.00/5.0		40.1 1019	128.0 3251			129 102	485	655	820	905	975
37.00R57 ★★	TB599	E-4	27.00/6.0		41.5 1054	135.5 3442			129 102	550	685	860	950	1075
40.00R57 ★★	TB599	E-4	29.00/6.0		43.8 1111	140.5 3569			129 102	600	840	1050	1155	1190
46/90R57 ★★	TB599	E-4	32.00/6.0		46.8 1187	140.5 3569			129 102	625	875	1095	1204.5	1300



30MPH (50KM/H) MAXIMUM SPEED OFF-THE-ROAD

RADIAL	PSI	65	69	73	76	80	83	87	91	94	98	102					
	KPA	450	475	500	525	550	575	600	625	650	675	700					
27.00R49	LBS	43000	44100*	45400	48100	49400	50700	52000	55100	56800	58400	60000**					
	KG	19500	20000*	20600	21800	22400	23000	23600	25000	25750	26500	27250**					
33.00R51	LBS	60000	64000*	66000	68000	71500	74000	76000	78500	80500	82500	85500**					
	KG	27250	29000*	30000	30750	32500	33500	34500	35500	36500	37500	38750**					
36.00R51	LBS	74000	78500*	80500	82500	85500	88000	91000	93500	96500	99000	102000**					
	KG	33500	35500*	36500	37500	38750	40000	41250	42500	43750	45000	46250**					
37.00R57	LBS	82500	85500*	88000	91000	96500	99000	102000	104500	107500	110000	113500**					
	KG	37500	38750*	40000	41250	43750	45000	46250	47500	48750	50000	51500**					
40.00R57	LBS	93500	99000*	102000	107500	110000	113500	117000	120000	123500	128000	132500**					
	KG	42500	45000*	46250	48750	50000	51500	53000	54500	56000	58000	60000**					
46/90R57	LBS	99000	104500*	107500	113500	117000	120000	123500	128000	132500	135500	139000**					
	KG	45000	47500*	48750	51500	53000	54500	56000	58000	60000	61500	63000**					





TB515



TB516

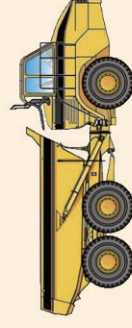
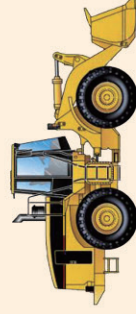


TL508



TL612

Size	Type	Ind Code	Rim Width & Flange	Min Dual Spacing in mm	INFLATED DIMENSIONS		LOADED DIMENSIONS		Tread Depth 32 nd in mm	PERFORMANCE CAPABILITY		
					Overall Width in mm	Overall Diameter in mm	Static Load Rad in mm			T1	T2	T3
15.5-25	TL612 12PR	E-3	12.00/1.3		15.6 395	50.2 1275	22.8 580		31.5 25			
	TL508 12PR	E-2	12.00/1.3		15.6 395	50.2 1275	22.8 580		31.5 25			
17.5R25	TB515 ★/★★	G-2	14.00/1.5		17.5 445	53.1 1348	24.0 610		34.0 27			
		L-2	14.00/1.5		17.5 445	53.1 1348	23.6 600		34.0 27			
	TB516 ★/★★	E-3	14.00/1.5		17.5 445	53.1 1348	23.6 600		32.8 26	110	140	170
		L-3	14.00/1.5		17.5 445	53.1 1348	23.6 600		32.8 26			
17.5-25	TL612 12,16PR	E-3	14.00/1.5		17.5 445	53.1 1350	24.0 611		32.1 25.5			
	TL508 12,16PR	E-2	14.00/1.5		17.5 445	53.1 1350	24.0 611		31.5 25			



30MPH (50KM/H) MAXIMUM SPEED OFF-THE-ROAD

BIAS	PSI KPA	33 225	36 250	40 275	44 300	47 325	51 350	54 375	58 400	62 425	65 450	69 475	73 500
15.5-25	LBS KG	6600 3000	7150(12) 3250(12)										
17.5-25	LBS KG	8050(12) 3650(12)	8550 3875	9100 4125	9350(16) 4250(16)								
RADIAL	PSI KPA	40 275	44 300	47 325	51 350	54 375	58 400	62 425	65 450	69 475	73 500	76 525	
17.5R25	LBS KG	7400 3350	7850 3550	8250 3750	8800 4000	9100* 4125*	9650 4375	10200 4625	10500 4750	11000 5000	11400 5150	12000** 5450**	

25MPH (40KM/H) MAXIMUM SPEED OFF-THE-ROAD

RADIAL	PSI KPA	18 125	22 150	25 175	29 200	33 225	36 250	40 275	44 300
17.5R25	LBS	4080	4680	5200	5840	6400	6800	7400	8050*
	KG	1850	2120	2360	2650	2900	3075	3350	3650*

5MPH (10KM/H) MAXIMUM SPEED OFF-THE-ROAD

BIAS	PSI KPA	40 275	44 300	47 325	51 350	54 375	58 400	62 425	65 450	69 475	73 500	76 525	80 550
15.5-25	LBS KG	9900 4500	10500 4750	10700 4875	11400 5150	11700 5300	12300(12) 5600(12)						
17.5-25	LBS KG	11700 5300	12300 5600	12800 5800	13600(12) 6150(12)	13900 6300	14800 6700	15200 6900	15700 7100	16100(16) 7300(16)			
RADIAL	PSI KPA	58 400	62 425	65 450	69 475	73 500	76 525	80 550	83 575	87 600	91 625	94 650	
17.5R25	LBS KG	13200 6000	13600 6150	14300 6500	14800 6700	15700* 7100*	16100 7300	16500 7500	17100 7750	17600 8000	18200 8250	18700** 8500**	



TB515



TB516



TL538S+

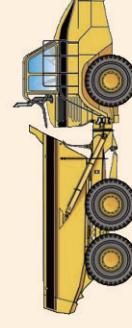
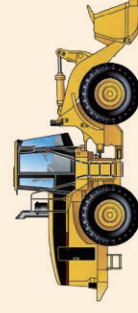
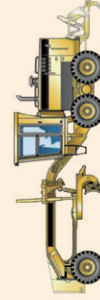


TL508



TL612

Size	Type	Ind Code	Rim Width & Flange	Min. Dual Spacing in mm	INFLATED DIMENSIONS		LOADED DIMENSIONS		Tread Depth 32 nd in mm	PERFORMANCE CAPABILITY		
					Overall Width in mm	Overall Diameter in mm	Static Load Rad in mm	T1		T2	T3	
20.5R25	TB515 ★/★★	G-2	17.00/2.0		20.5 521	58.8 1493	26.3 669		37.8 30			
		L-2	17.00/2.0		20.5 521	58.8 1493	25.8 656		37.8 30			
	TB516 ★/★★	E-3	17.00/2.0		20.5 521	58.8 1493	25.8 656		37.8 30	120	150	190
		L-3	17.00/2.0		20.5 521	58.8 1493	25.8 656		37.8 30			
	TL538S+ ★/★★	L-5	17.00/2.0		20.5 521	60.9 1548	25.8 656		88.2 70			
20.5-25	TL612 16,20PR	E-3	17.00/2.0		20.5 520	58.7 1490	26.3 668		35.9 28.5			
		E-3	17.00/2.0		20.5 520	58.7 1490	26.3 668		36.5 29			
	TL508 12,16PR	E-2	17.00/2.0		20.5 520	58.7 1490	26.3 668		35.9 28.5			



30MPH (50KM/H) MAXIMUM SPEED OFF-THE-ROAD

BIAS	PSI	33	36	40	44	47	51	54	58	62	65	69	73
	KPA	225	250	275	300	325	350	375	400	425	450	475	500
20.5-25	LBS	10700	11400	12000(16)	12800	13200(20)	6000(20)						
	KG	4875	5150	5450(16)	5800	6000(20)							
RADIAL	PSI	40	44	47	51	54	58	62	65	69	73	76	
	KPA	275	300	325	350	375	400	425	450	475	500	525	
20.5R25	LBS	9650	10500	11000	11700	12300*	12800	13600	14300	14800	15200	16100**	
	KG	4375	4750	5000	5300	5600*	5800	6150	6500	6700	6900	7300**	

25MPH (40KM/H) MAXIMUM SPEED OFF-THE-ROAD

RADIAL	PSI	18	22	25	29	33	36	40	44				
	KPA	125	150	175	200	225	250	275	300				
20.5R25	LBS	5360	6150	6950	7600	8550	9100	9650	10200*				
	KG	2430	2800	3150	3450	3875	4125	4375	4625*				

5MPH (10KM/H) MAXIMUM SPEED OFF-THE-ROAD

BIAS	PSI	40	44	47	51	54	58	62	65	69	73	76	80
	KPA	275	300	325	350	375	400	425	450	475	500	525	550
20.5-25	LBS	15700	16500	17100	18200(16)	18700	19300	20400	20900(20)	21500	22000	22700	
	KG	7100	7500	7750	8250(16)	8500	8750	9250	9500(20)	9750	10000	10300	
RADIAL	PSI	58	62	65	69	73	76	80	83	87	91	94	
	KPA	400	425	450	475	500	525	550	575	600	625	650	
20.5R25	LBS	17600	18200	19300	19800	20900*	21500	22000	22700	24000	24700	25400**	
	KG	8000	8250	8750	9000	9500*	9750	10000	10300	10900	11200	11500**	



Size	Type	Ind Code	Rim Width & Flange	Min. Dual Spacing in mm	INFLATED DIMENSIONS		LOADED DIMENSIONS		Tread Depth 32 nd in mm	PERFORMANCE CAPABILITY		
					Overall Width in mm	Overall Diameter in mm	Static Load Rad in mm			T1	T2	T3
23.5R25	TM518											
	TM518 */**	E-2	19.50/2.5		23.2 590	64.8 1647	28.3 720	37.8 30		170	200	260
		L-2	19.50/2.5		23.2 590	64.8 1647	27.8 705	37.8 30				
	TB516 */**	E-3	19.50/2.5		23.6 600	64.8 1647	28.5 724	40.3 32		145	170	230
		L-3	19.50/2.5		23.6 600	64.8 1647	27.8 706	40.3 32				
	TB516-II *	L-3	19.50/2.5		24.0 609	63.4 1611	28.5 714	40.3 32				
	TL528 */**	E-3	19.50/2.5		23.8 605	64.8 1647	28.7 730	50.4 40		150	190	230
		L-3	19.50/2.5		23.8 605	64.8 1647	28.7 730	50.4 40				
	TB508S **	E-4	19.50/2.5		23.8 605	64.2 1630	28.3 720	59.2 47		115	135	185
	TL538S+ */**	L-5	19.50/2.5		23.8 605	65.2 1657	27.8 705	97.0 77				
23.5-25	TL559S+ **	L-5	19.50/2.5		23.8 605	65.2 1657	27.8 705	103.3 82				
	TL612 16,18,20PR	E-3	19.50/2.5		23.4 595	63.6 1615	28.3 719	39.7 31.5				
		E-3	19.50/2.5		23.4 595	63.6 1615	28.3 719	39.7 31.5				
	TL508 16PR	E-2	19.50/2.5		23.4 595	63.6 1615	28.3 719	39.7 31.5				

30MPH (50KM/H) MAXIMUM SPEED OFF-THE-ROAD

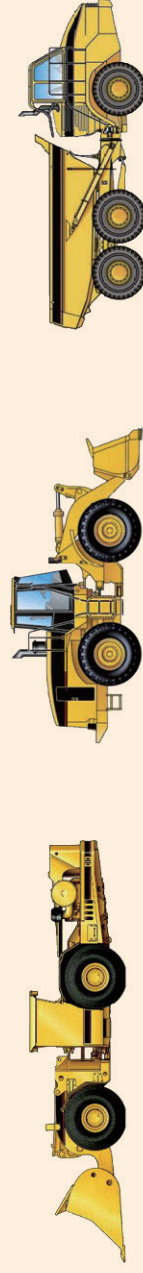
BIAS	PSI	33	36	40	44	47	51	54	58	62	65	69	73	
	KPA	225	250	275	300	325	350	375	400	425	450	475	500	
23.5-25	LBS	13600(16)	14300	14800(18)	16100(20)	17100								
	KG	6150(16)	6500	6700(18)	7300(20)	7750								
RADIAL	PSI	40	44	47	51	54	58	62	65	69	73	76		
	KPA	275	300	325	350	375	400	425	450	475	500	525		
23.5R25	LBS	12300	13200	14300	14800	15700*	16500	17100	18200	18700	19800	20400**		
	KG	5600	6000	6500	6700	7100*	7500	7750	8250	8500	9000	9250**		

5MPH (10KM/H) MAXIMUM SPEED OFF-THE-ROAD

BIAS	PSI	40	44	47	51	54	58	62	65	69	73	76	80	
	KPA	275	300	325	350	375	400	425	450	475	500	525	550	
23.5-25	LBS	19800	20900(16)	22000	22200(18)	24000(20)	24700	26000	26800					
	KG	9000	9500(16)	10000	10050(18)	10900(20)	11200	11800	12150					
RADIAL	PSI	58	62	65	69	73	76	80	83	87	91	94		
	KPA	400	425	450	475	500	525	550	575	600	625	650		
23.5R25	LBS	22700	23400	24700	25400	26800*	27600	28300	29100	30000	30900	32000**		
	KG	10300	10600	11200	11500	12150*	12500	12850	13200	13600	14000	14500**		



Size	Type	Ind Code	Rim Width & Flange	Min. Dual Spacing in mm	INFLATED DIMENSIONS		LOADED DIMENSIONS		Tread Depth 32 nd in mm	PERFORMANCE CAPABILITY		
					Overall Width in mm	Overall Diameter in mm	Static Load Rad in mm	T1		T2	T3	
26.5R25												
	TB516 ★/★★ TL559 ★★★	E-3	22.00/3.0		26.5 673	68.9 1750	30.5 775	44.0 35	155	190	240	
		L-3	22.00/3.0		26.5 673	68.9 1750	29.8 758	44.0 35				
		IND-3	22.00/3.0		26.5 673	68.9 1750		44.0 35				
	TB598S ★★	E-4	22.00/3.0		26.5 673	70.8 1798	30.5 775	68.0 54	125	150	195	
	TL538S+ ★/★★ TL559S+ ★★	L-5	22.00/3.0		26.5 673	70.8 1798	29.4 748	108 86				
		L-5	22.00/3.0		26.5 673	70.8 1798	29.8 758	113 90				
TSMS+ ★/★★	L-5S	22.00/3.0		26.5 673	70.8 1798	29.8 758	118 94					
26.5-25	L-5S 36PR TL612 20,28PR	L-5S	22.00/3.0		26.5 675	70.9 1800	31.3 795	109.6 87				
		E-4	22.00/3.0		26.5 675	70.9 1800	31.3 795	68.0 54				
	E-3	22.00/3.0		26.5 675	70.9 1800	31.3 795	44.1 35					



30MPH (50KM/H) MAXIMUM SPEED OFF-THE-ROAD

BIAS	PSI	33	36	40	44	47	51	54	58	62	65	69	73				
	KPA	225	250	275	300	325	350	375	400	425	450	475	500				
26.5-25	LBS	17100	18200(20)	19300	20400	20900	22000(28)										
	KG	7750	8250(20)	8750	9250	9500	10000(28)										
RADIAL	PSI	40	44	47	51	54	58	62	65	69	73	76					
	KPA	275	300	325	350	375	400	425	450	475	500	525					
26.5R25	LBS	15700	16500	17600	18700	19800*	20900	21500	22700	23400	24700	25400**					
	KG	7100	7500	8000	8500	9000*	9500	9750	10300	10600	11200	11500**					

5MPH (10KM/H) MAXIMUM SPEED OFF-THE-ROAD

BIAS	PSI	40	44	47	51	54	58	62	65	69	73	76	80	83	87	91	
	KPA	275	300	325	350	375	400	425	450	475	500	525	550	575	600	625	
26.5-25	LBS	25400	26800	27600	29100(20)	30000	30900	32000	33100	34200(28)	35300	36400	37500	38600	39700	40800(36)	
	KG	11500	12150	12500	13200(20)	13600	14000	14500	15000	15500(28)	16000	16500	17000	17500	18000	18500(36)	
RADIAL	PSI	58	62	65	69	73	76	80	83	87	91	94					
	KPA	400	425	450	475	500	525	550	575	600	625	650					
26.5R25	LBS	28300	29100	30900	32000	33100*	34200	35300	36400	37500	39700	40800**					
	KG	12850	13200	14000	14500	15000*	15500	16000	16500	17000	18000	18500**					



TB516



TL538S+



TL559S+

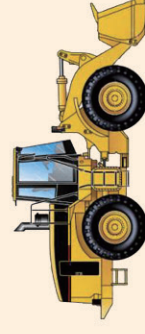
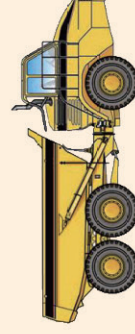


TB598S



TL612

Size	Type	Ind Code	Rim Width & Flange	Min. Dual Spacing in mm	INFLATED DIMENSIONS		LOADED DIMENSIONS		Tread Depth 32 nd in mm	PERFORMANCE CAPABILITY		
					Overall Width in mm	Overall Diameter in mm	Static Load Rad in mm			T1	T2	T3
29.5R25	TB516 */**	E-3	25.00/3.0		29.8 756	73.8 1874	32.6 829		47.9 38	180	230	290
		L-3	25.00/3.0		29.8 756	73.8 1874	31.8 807		47.9 38			
	TB598S **	E-4	25.00/3.0		30.1 764	73.5 1867	33.7 856		70.6 56	135	175	225
	TL538S+ */**	L-5	25.00/3.0		29.3 743	75.0 1906	31.8 807		118.4 94			
	TL559S+ **	L-5	25.00/3.0		29.7 754	74.9 1902	31.8 807		124.7 99			
29.5-25	TL612 22,20PR	E-3	25.00/3.5		29.5 750	73.8 1875	32.5 826		54.2 43			



30MPH (50KM/H) MAXIMUM SPEED OFF-THE-ROAD

BIAS	PSI	33	36	40	44	47	51	54	58	62	65	69	73
	KPA	225	250	275	300	325	350	375	400	425	450	475	500
29.5-25	LBS	20400	22000(22)	23400	24000	25400(28)							
	KG	9250	10000(22)	10600	10900	11500(28)							
RADIAL	PSI	40	44	47	51	54	58	62	65	69	73	76	
	KPA	275	300	325	350	375	400	425	450	475	500	525	
29.5R25	LBS	18700	20400	21500	22700	24000*	25400	26000	27600	28300	30000	30900**	
	KG	8500	9250	9750	10300	10900*	11500	11800	12500	12850	13600	14000**	

5MPH (10KM/H) MAXIMUM SPEED OFF-THE-ROAD

BIAS	PSI	40	44	47	51	54	58	62	65	69	73	76	80
	KPA	275	300	325	350	375	400	425	450	475	500	525	550
29.5-25	LBS	30000	32000	33100(22)	35300	36400	37500	38600(28)					
	KG	13600	14500	15000(22)	16000	16500	17000	17500(28)					
RADIAL	PSI	58	62	65	69	73	76	80	83	87	91	94	
	KPA	400	425	450	475	500	525	550	575	600	625	650	
29.5R25	LBS	34200	35300	37500	38600	39700*	41900	43000	44100	45400	46700	49400**	
	KG	15500	16000	17000	17500	18000*	19000	19500	20000	20600	21200	22400**	



TB516

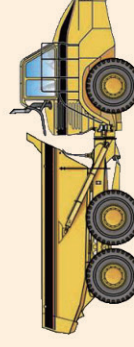


TL568+



TL612

Size	Type	Ind Code	Rim Width & Flange	Min. Dual Spacing in mm	INFLATED DIMENSIONS		LOADED DIMENSIONS		Tread Depth 32 nd in mm	PERFORMANCE CAPABILITY		
					Overall Width in mm	Overall Diameter in mm	Static Load Rad in mm	T1		T2	T3	
29.5R29	TB516 ★/★★	E-3	25.00/3.0		29.8 757	78.1 1983	34.5 876	47.9 38	200	250	330	
		L-3	25.00/3.0		29.8 757	78.1 1983		47.9 38				
29.5-29	TL612 43PR	E-3	25.00/3.5		29.5 750	77.8 1975	34.1 867	54.2 43				
33.25R29	TL568+ ★/★★	E-3	27.00/3.5		33.25 845	82.3 2090		55.0 44	310	390	490	



30MPH (50KM/H) MAXIMUM SPEED OFF-THE-ROAD

BIAS	PSI	33	36	40	44	47	51	54	58	62	65	69	73
	KPA	225	250	275	300	325	350	375	400	425	450	475	500
29.5-29	LBS	22000	23400	24700	26000	26800(28)							
	KG	10000	10600	11200	11800	12150(28)							
RADIAL	PSI	40	44	47	51	54	58	62	65	69	73	76	
	KPA	275	300	325	350	375	400	425	450	475	500	525	
29.5R29	LBS	20400	21500	22700	24000	25400*	26800	27600	29100	30000	32000	33100**	
	KG	9250	9750	10300	10900	11500*	12150	12500	13200	13600	14500	15000**	
33.25R29	LBS	24700	26800	28300	30000	30900*	33100	34200	36400	37500	38600	40800**	
	KG	11200	12150	12850	13600	14000*	15000	16500	16500	17000	17500	18500**	

5MPH (10KM/H) MAXIMUM SPEED OFF-THE-ROAD

[illegible]



TL535S+

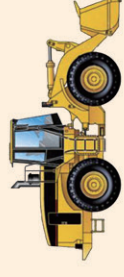
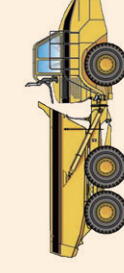


TB598



TL520

Size	Type	Ind Code	Rim Width & Flange	Min. Dual Spacing in mm	INFLATED DIMENSIONS		LOADED DIMENSIONS		Tread Depth 32^{nd} in mm	PERFORMANCE CAPABILITY		
					Overall Width in mm	Overall Diameter in mm	Static Load Rad in mm	T1		T2	T3	
35/65R33	TL535S+ ★/★★	L-5	28.00/3.5			35.0 889	81.78 2077		119.7 95			
35/65-33	TL520 42PR	L-5	28.00/3.5			35.0 890	81.7 2075	35.7 908	122.2 97			
45/65-45	TL520 46.58PR	L-5	36.00/4.5			44.9 1140	107.7 2735	46.4 1179	146.1 116			
750/65R25	TB598 ★/★★	E-3	24.00/3.0			29.4 746	63 1600		52.9 42	130	190	250
		L-3	24.00/3.0			29.4 746	63 1600		52.9 42			
775/65R29	TB598 ★/★★	E-3	24.00/3.5			30.4 771	68.7 1745		55.4 44	195	235	325
		L-3	24.00/3.5			30.4 771	68.7 1745		55.4 44			
875/65R29	TB598 ★/★★	E-3	28.00/3.5			34.2 868	73.5 1868	32.5 825	63.0 50	230	285	360
		L-3	28.00/3.5				63.0 50					



30MPH (50KM/H) MAXIMUM SPEED OFF-THE-ROAD

[illegible]

5MPH (10KM/H) MAXIMUM SPEED OFF-THE-ROAD

BIAS	PSI	40	44	47	51	54	58	62	65	69	73	76	80	83	87	91	93	98
	KPA	275	300	325	350	375	400	425	450	475	500	525	550	575	600	625	650	675
35/65-33	LBS	36400	37500	39700	41900	43000	44100	46700	48100	49400	50700	52000(36)	53600	55100	56900	58400(42)		
	KG	16600	17000	18000	19000	19500	20000	21200	21800	22400	23000	23600(36)	24300	25000	25800	26500(42)		
45/65-45	LBS	66000	69500	71500	76000	78500	82500	85500	88000	91000	93500	96500(46)	99000	102000	104700	107400	107400	110200(58)
	KG	30000	31500	32500	34500	35500	37500	38750	40000	41250	42500	43750(46)	45000	46250	47500	48750	48750	50000(58)
RADIAL	PSI	58	62	65	69	73	76	80	83	87	91	94						
	KPA	400	425	450	475	500	525	500	575	600	625	650						
35/65R33	LBS	43000	45400	46700	49400	50700*	52000	53600	55100	60000	61500	60000**						
	KG	19500	20600	21200	22400	23000*	23600	24300	25000	27250	28000	27250**						
750/65R25	LBS	29100	30000	32000	33100*	34200	35300	36400	37500	38600	40900**							
	KG	13200	13600	14500	15000*	15500	16000	16500	17000	17500	18500**							
775/65R29	LBS	33100	34200	36400	37500*	38600	40800	41900	43000	44100	45400**							
	KG	15000	15500	16500	17000*	17500	18500	19000	19500	20000	20600**							
875/65R29	LBS	40800	43000	45400	46700*	48100	50700	52000	53600	55100	56800**							
	KG	18500	19500	20600	21200*	21800	23000	23600	24300	25000	25750**							



TL566



TL506

Size	Type	Ind Code	Rim Width & Flange	Min. Dual Spacing in mm	INFLATED DIMENSIONS		LOADED DIMENSIONS		Tread Depth 32 nd in mm	PERFORMANCE CAPABILITY		
					Overall Width in mm	Overall Diameter in mm	Static Load Rad in mm	T1		T2	T3	
460/85R30	TL566	E-2	W14L		17.9 455	178.9 4544	75.6 1920		61.7 49			
1500x600-635	TL506 ^{14PR}	E-2	19.50/2.5		23.6 600	59.1 1500	26.5 672		31.5 25			

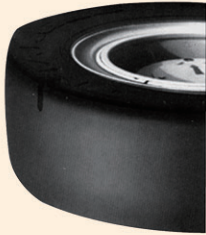


25MPH (40KM/H) MAXIMUM SPEED OFF-THE-ROAD

[illegible][illegible]

5MPH (10KM/H) MAXIMUM SPEED OFF-THE-ROAD

[illegible][illegible]



L-4S

Size	Type	Ind Code	Rim Width & Flange	Min Dual Spacing in mm	INFLATED DIMENSIONS		LOADED DIMENSIONS		Tread Depth 32 nd in mm	PERFORMANCE CAPABILITY		
					Overall Width in mm	Overall Diameter in mm	Static Load Rad in mm	T1		T2	T3	
12.00-24	L-4S 20PR	L-4S	8.5	15.4 391	12.4 315	50.2 1275	23.8 604	42.2 33.5				



30MPH (50KM/H) MAXIMUM SPEED OFF-THE-ROAD

BIAS	PSI	40	44	47	51	54	58	62	65	69	73	76	80	83	87	91	93	
	KPA	275	300	325	350	375	400	425	450	475	500	525	550	575	600	625	650	
12.00-24	LBS	5520	5680	6000	6150	6600	6800	6950	7150	7400	7600	7850	8050(20)					
	KG	2500	2575	2725	2800	3000	3075	3150	3250	3350	3450	3550	3650(20)					

5MPH (10KM/H) MAXIMUM SPEED OFF-THE-ROAD

BIAS	PSI	69	73	76	80	83	87	91	93	98	102	105	109	112	116	119	123	126	130	133
	KPA	475	500	525	550	575	600	625	650	675	700	725	750	775	800	825	850	875	900	925
12.00-24	LBS	11000	11400	11700	12000	12300	12600	12800	13000	13300	13600	13900	14300	14800	15200(20)					
	KG	5000	5150	5300	5450	5600	5600	5800	5900	6050	6200	6350	6500	6700	6900(20)					





TB812



TB822

Size	Type	Ind Code	Rim Width & Flange	Min Dual Spacing in mm	INFLATED DIMENSIONS		LOADED DIMENSIONS		Tread Depth 32 ^{1/4} in mm	PERFORMANCE CAPABILITY		
					Overall Width in mm	Overall Diameter in mm	Static Load Rad in mm	T1		T2	T3	
23.1-26	TB822 12,14PR	E-7	DW20		23.1 587	62.2 1581	27.8 705		35.3 28			
	TB812	R-3	DW20		23.4 595	59.1 1500	26.5 672		18.9 15			



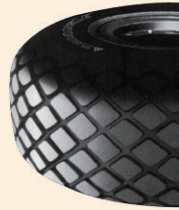
18MPH (30KM/H) MAXIMUM SPEED OFF-THE-ROAD

BIAS	PSI	25	30																
	KPA	170	200																
23.1-26	LBS	7920	8900																
	KG	3600	4050																

5MPH (10KM/H) MAXIMUM SPEED OFF-THE-ROAD

BIAS	PSI	65	69	73	76	80	83	87	91	94	98	102	102
	KPA	450	475	500	525	550	575	600	625	650	675	700	700
23.1-26	LBS												
	KG												





TB812



TR139



TR128

Size	Type	Ind Code	Rim Width & Flange	Min. Dual Spacing in mm	INFLATED DIMENSIONS		LOADED DIMENSIONS		Tread Depth 32 nd in mm	PERFORMANCE CAPABILITY		
					Overall Width in mm	Overall Diameter in mm	Static Load Rad in mm	T1		T2	T3	
24-21	TB812 _{14PR}	R-3	18.0/1.5		24.0 610	53.9 1370	24.4 619	22.7 18				
27.25-21	TR139 _{16PR}	E-1	19.50/1.5		27.0 685	59.4 1510	26.6 676	20.6 16				
66×44.00-25	TR128 _{6,16,20PR}	E-7	36.0TH		44.0 1118	67.0 1702	29.7 755	12.6 10				



30M

69

5MF

69

*Green Tire,
Low-carbon Life
Low Energy Consumption and Eco-friendliness*



TRIANGLE GROUP CO.,LTD

Add:NO.56 Qingdao Middle Road Weihai Shandong China
Tel:0086-5330561 5318745 5330562 5322987
Fax:+86-631-5318743
P.C.:264200
HTTP://www.triangle.com.cn
E-Mail:Export@triangle.com.cn

